

# PRODUCT INFORMATION PACKET

Model No: 132M4B3NM

General Purpose IEC Motor, 10 HP, 3 Ph, 50 Hz, 380/660 V, 1455 RPM, Frame 132M, TEFC

# NEWMAN

TRUST IS POWER



Newman Motors is a trademark of Newman Industrial Company LLC.  
©2023 Newman Motors Company, All Rights Reserved



### Technical Specifications

Output HP	10 Hp	Output KW	7.5 kW
Frequency	50 Hz	Voltage	380VD / 660VY
Rated Current	15.5 / 8.9 A	Speed	1455 rpm
Service Factor	1.0	Phase	3
Efficiency 100%	88.7 %	Power Factor 100%	0.83
Starting Current	7.3	Number of poles	4
Starting Torque	2.0	Rated Torque	49.2 Nm
Frame Size	132M	Enclosure	Totally Enclosed Fan Cooled
Duty	S1= Continuous	Insulation Class	155 (F) / 130 (B)
Explosion Protection	Without (Standard)	Efficiency Class	IE2
Thermal Protection	Without	Direction of Rotation	Bidirectional
Drive End Bearing Size	6208 C3 2RZ	Opp Drive End Bearing Size	6208 C3 2RZ
Drive End Bearing	Ball	Opp Drive End Bearing	Ball
Vibration Class	A (Standard)	Terminal Box Position	Terminal Box on Left
Method of Cooling	IC411	Weight	47.5
Type of Construction	IMB3	RAL Color	5001
Altitude About Sea Level	1000 m	Ambient Temperature	40 °C
Motor Orientation	Horizontal	Paint Class	C2 (Standard)
IP Code	55	Frame Material	Aluminum
Shaft Diameter	38mm	Overall Length	80mm

1 2 3 4 5 6 7 8

A A

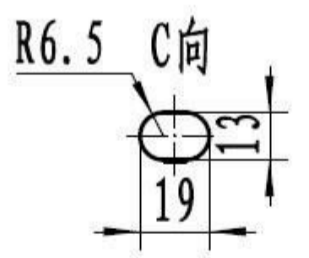
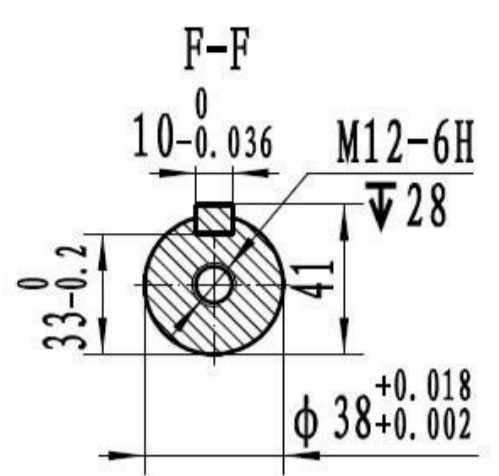
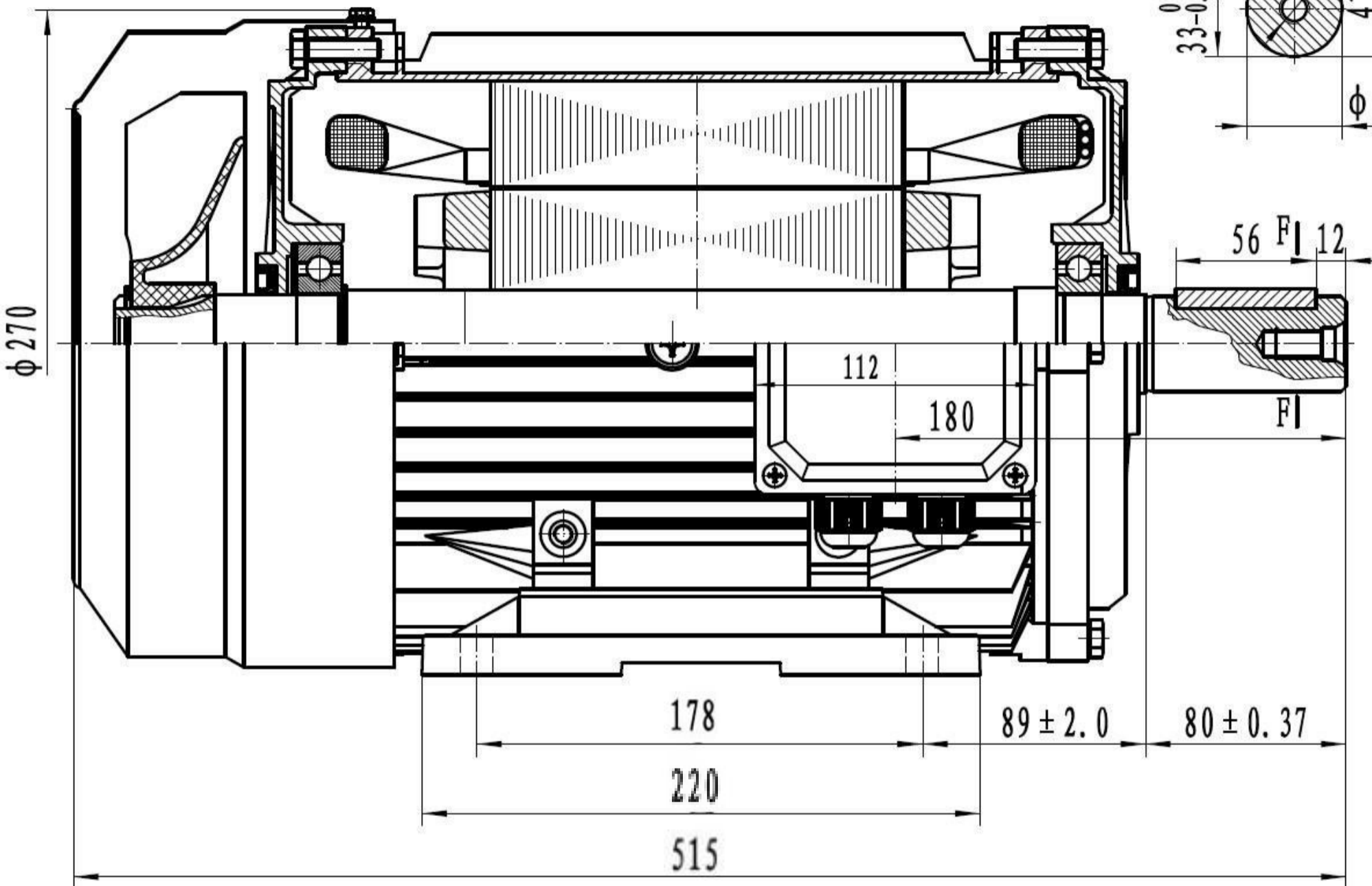
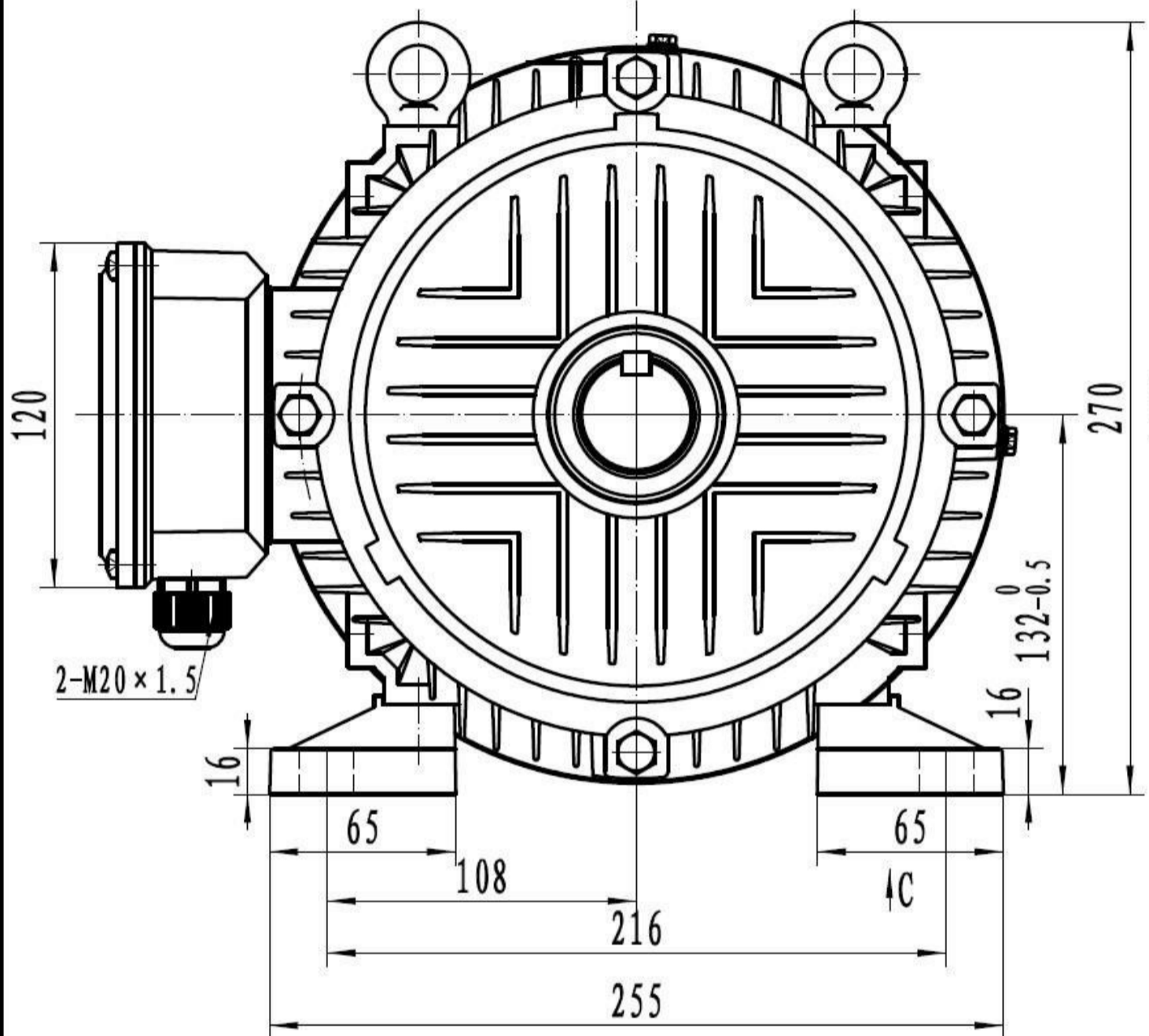
B B

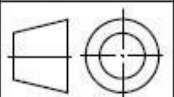
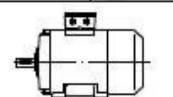
C C

D D

E E

F F



				<b>B3 Left Side Box</b>				
CHK D.		DATE				<b>132M4B3NM IP 55</b>		
APP D.		DATE		WEIGHT (KG)	47.5	SCALE	1:2.5	
<b>NEWMAN</b>								
						<b>IM B3</b>		

1 2 3 4 5 6 7 8

# Curve Torque (M/NM) vs Slip

132M4B3NM 10 HP, 3 Ph, 50 Hz, 380/660 V, 1455 RPM, Frame 132M, TEFC

Breakdown Torque: 3.125 - Slip: 0.28 // Rated Torque (NM): 49.2 Nm

